


SOFTWARE INSTALLATION PROCEDURE

- 1) PREREQUISITES – WINDOWS 10, MIN 8 GB RAM, MIN 500GB STORAGE, INSTALL ASP.NET CORE 8.0 RUNTIME CHECK BELOW LINK. WHILE INSTALLING IN SYSTEM USER SHOULD HAVE ALL THE ADMINSTATOR RIGHT.




- ASP.NET CORE 8.0 RUNTIME (V8.0.15) - WINDOWS HOSTING BUNDLE INSTALLER LINK: - [HTTPS://DOTNET.MICROSOFT.COM/EN-US/DOWNLOAD/DOTNET/THANK-YOU/RUNTIME-ASPNETCORE-8.0.15-WINDOWS-HOSTING-BUNDLE-INSTALLER](https://dotnet.microsoft.com/en-us/download/dotnet/thank-you/runtime-aspnetcore-8.0.15-windows-hosting-bundle-installer)

- 2) WE NEED TO DOWNLOAD THE APPLICATION SETUP FROM THE LINK BELOW.

[HTTPS://DOWNLOADS.ACTIVATIONKEY.IN/ORANGE/INDEX.HTML](https://downloads.activationkey.in/orange/index.html)

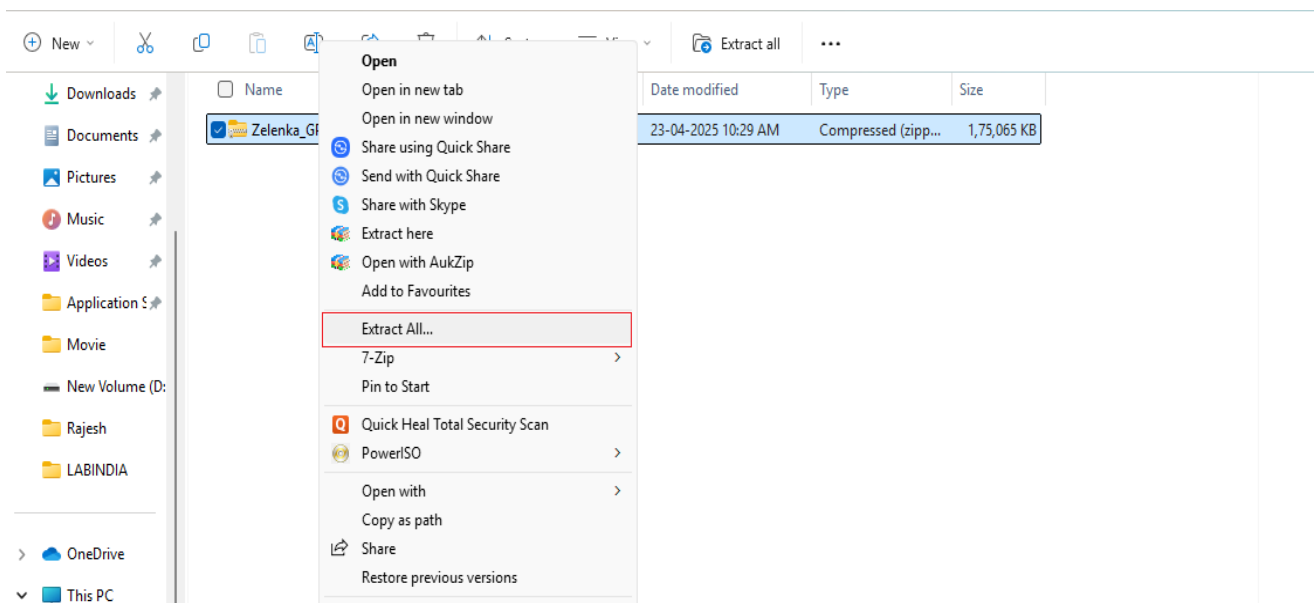
 **Glatt Systems Pvt. Ltd.**

Glatt Systems Application Setup Downloads

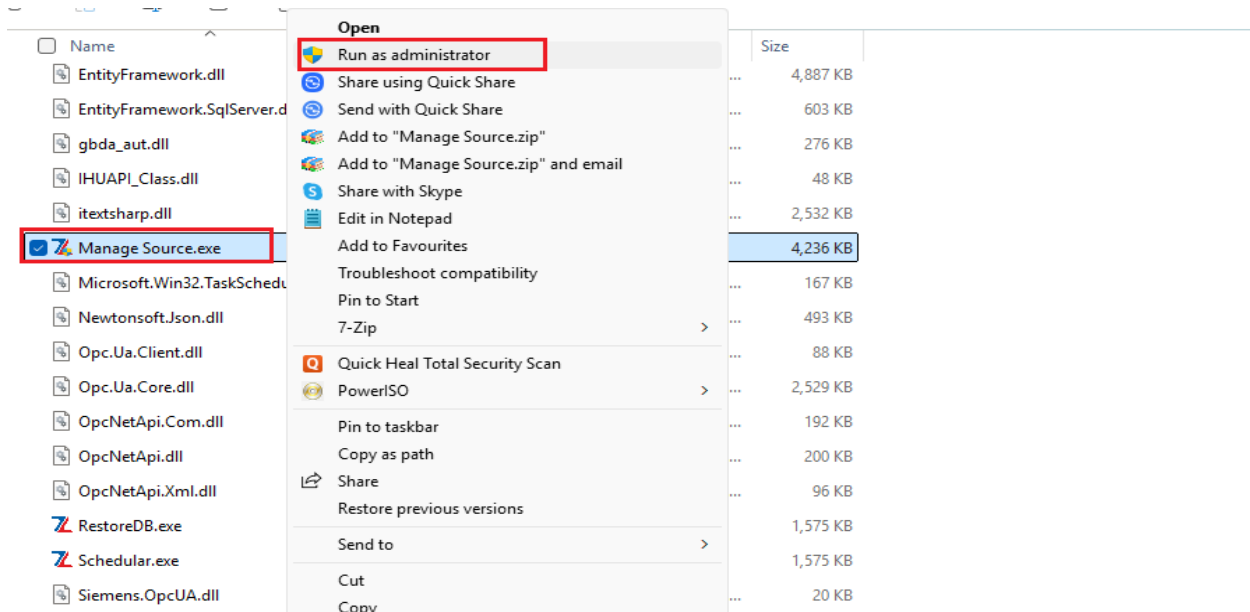
Sr. Nos.	Project Name	Download
1	GPCG Equipment (Date 21-04-2025)	
2	IGLNE Equipment (Date 21-04-2025)	
3	Coater Equipment (Date 21-04-2025)	

Click Here to Download Previous Application Setup

- 3) RIGHT CLICK ON DOWNLOADED ZIP AND SELECT **EXTRACT ALL** OPTION. UNZIP THE FOLDER INTO SECONDRY DRIVE WHERE USER WANT TO SAVE IT.



- 4) RUN THE MANAGE SOURCE.EXE WHERE USER SAVE THE EXTRACTED FILE
\\ZELENKA_GPCG\\WWWROOT\\DATA\\ZELENKA_CONFIG\\MANAGE SOURCE.EXE



- 5) IN MANAGE SOURCE UTILITY MODIFY SQL DETAILS TO CONNECT DATABASE WITH APPLICATION.

- INSERT THE HIGHLIGHTED DETAILS IN TEXT BOX

MANUAL SOURCE MAPPING

Source Type:

Close

SQL OPC DA OPC HDA SQL CSV PROFICY HISTORIAN MS ACCESS / SQL LITE

Source Config:

Authentication : SQL SQL Server : DS23\SQLSERVER2022

UserName : sa Password : DSmicro29

DataBase : NEProduction

Authentication* Check Connectivity

SQL Server*

Database*

User Name*

Password*

Port*

Update

- CLICK ON CHECK CONNECTIVITY BUTTON TO CHECK THE CONNECTION WITH SQL SERVER.

MANUAL SOURCE MAPPING

Source Type

Close

SQL OPC DA OPC HDA SQL CSV PROFICY HISTORIAN MS ACCESS / SQL LITE

Source Config

Authentication : SQL **SQL Server :** DESKTOP-NU4GC3S\SQLEXPRESS_2017

UserName : sa **Password :** DSmicro29

DataBase : Aureole_1_0

Authentication* **Check Connectivity**

SQL Server*

Database*

User Name*

Password*

Port* ?

Update

Manage Source

DATABASE CONNECTION SUCCESSFUL

OK

- CLICK ON UPDATE BUTTON TO SAVE RECORD AND THEN CLICK ON OK BUTTON.

MANUAL SOURCE MAPPING

Source Type

Close

SQL OPC DA OPC HDA SQL CSV PROFICY HISTORIAN MS ACCESS / SQL LITE

Source Config

Authentication : SQL **SQL Server :** DESKTOP-NU4GC3S\SQLEXPRESS_2017

UserName : sa **Password :** DSmicro29

DataBase : Aureole_1_0

Authentication*

SQL Server*

Database* →

User Name*

Password*

Port* ?

Update

Manage Source

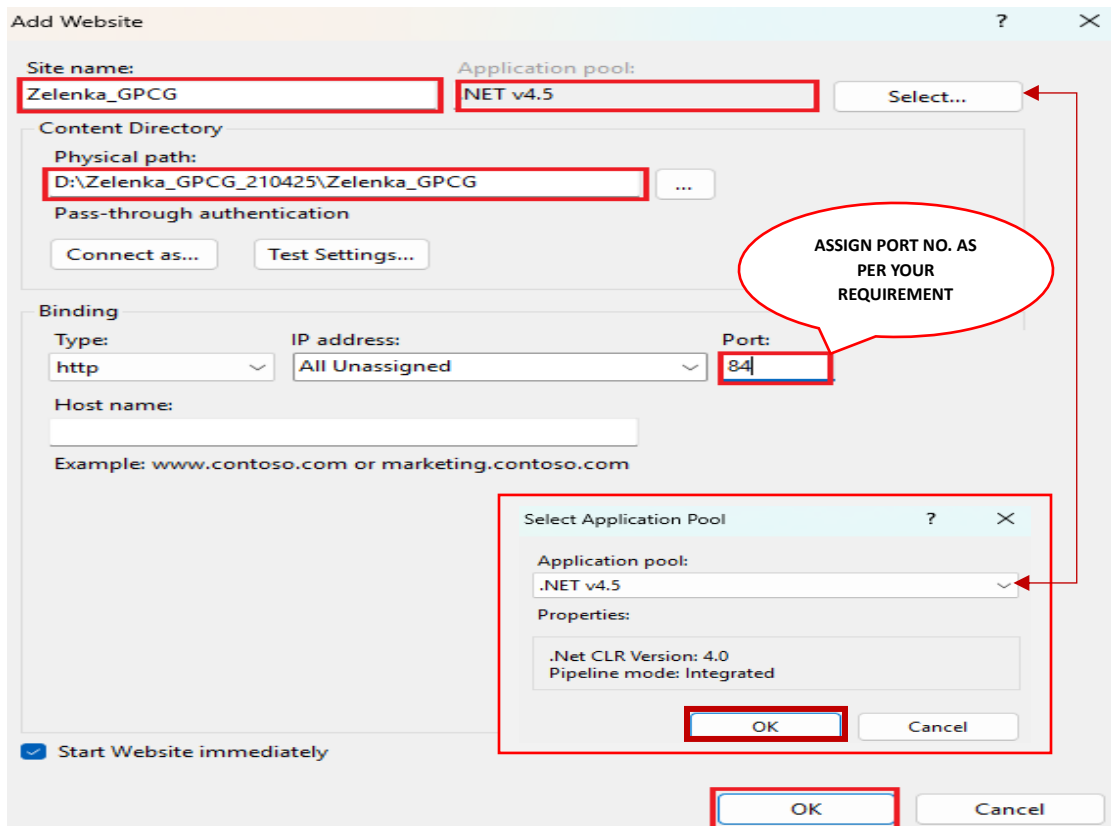
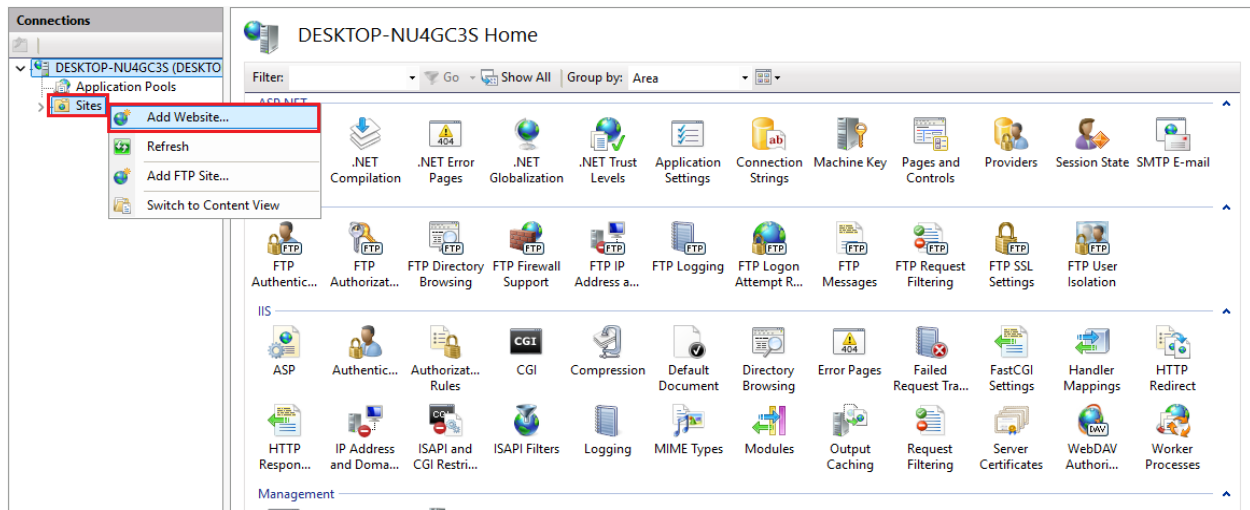
RECORD UPDATED SUCCESSFULLY

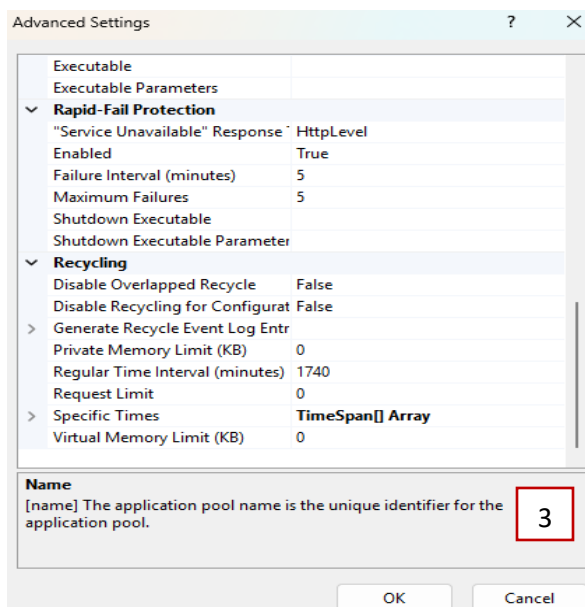
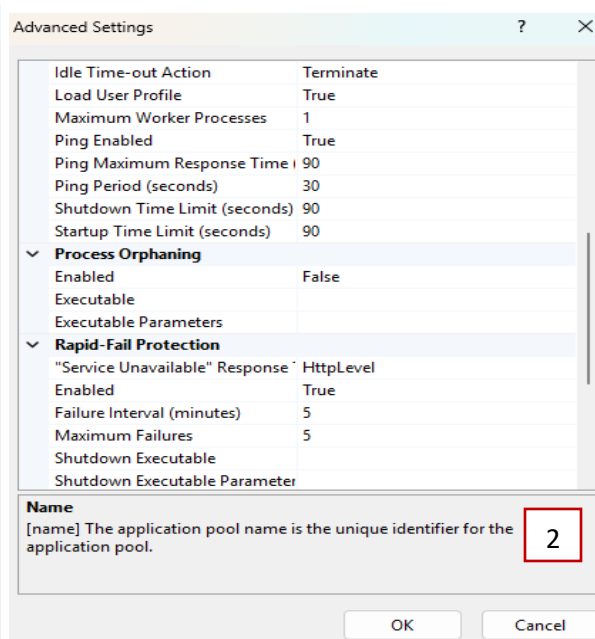
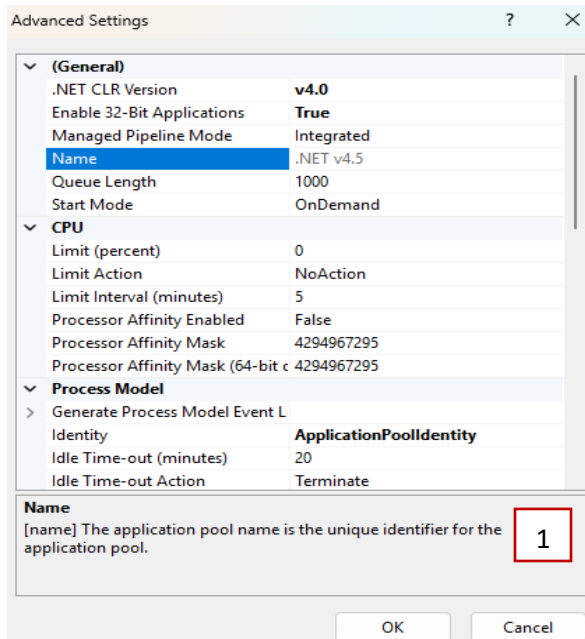
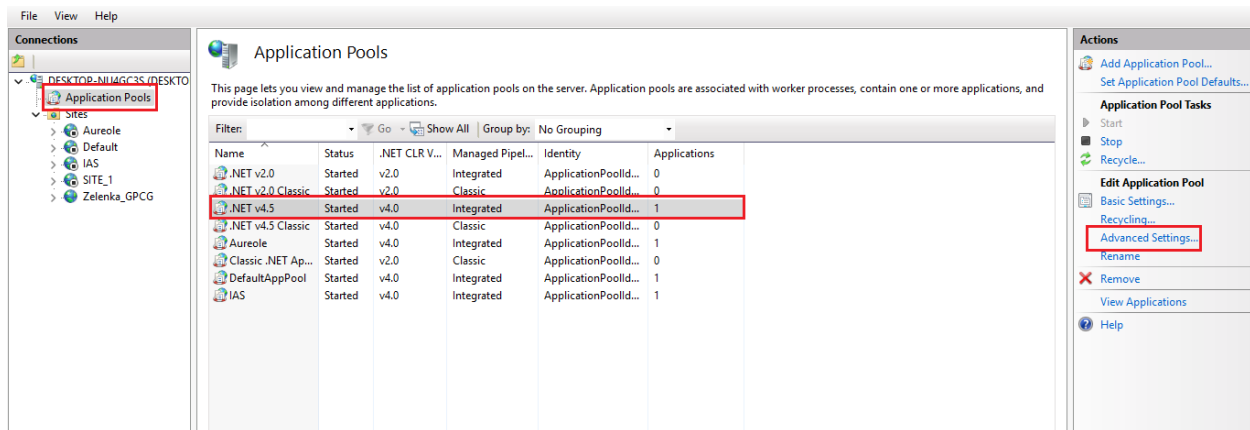
OK

- 6) OPEN IIS MANAGER TO ADD THE APPLICATION ON WEBSITE. IF IIS MANAGER IS NOT INSTALLED THEN REFER THE BELOW LINK TO SETUP FOR IIS INSTALLATION.

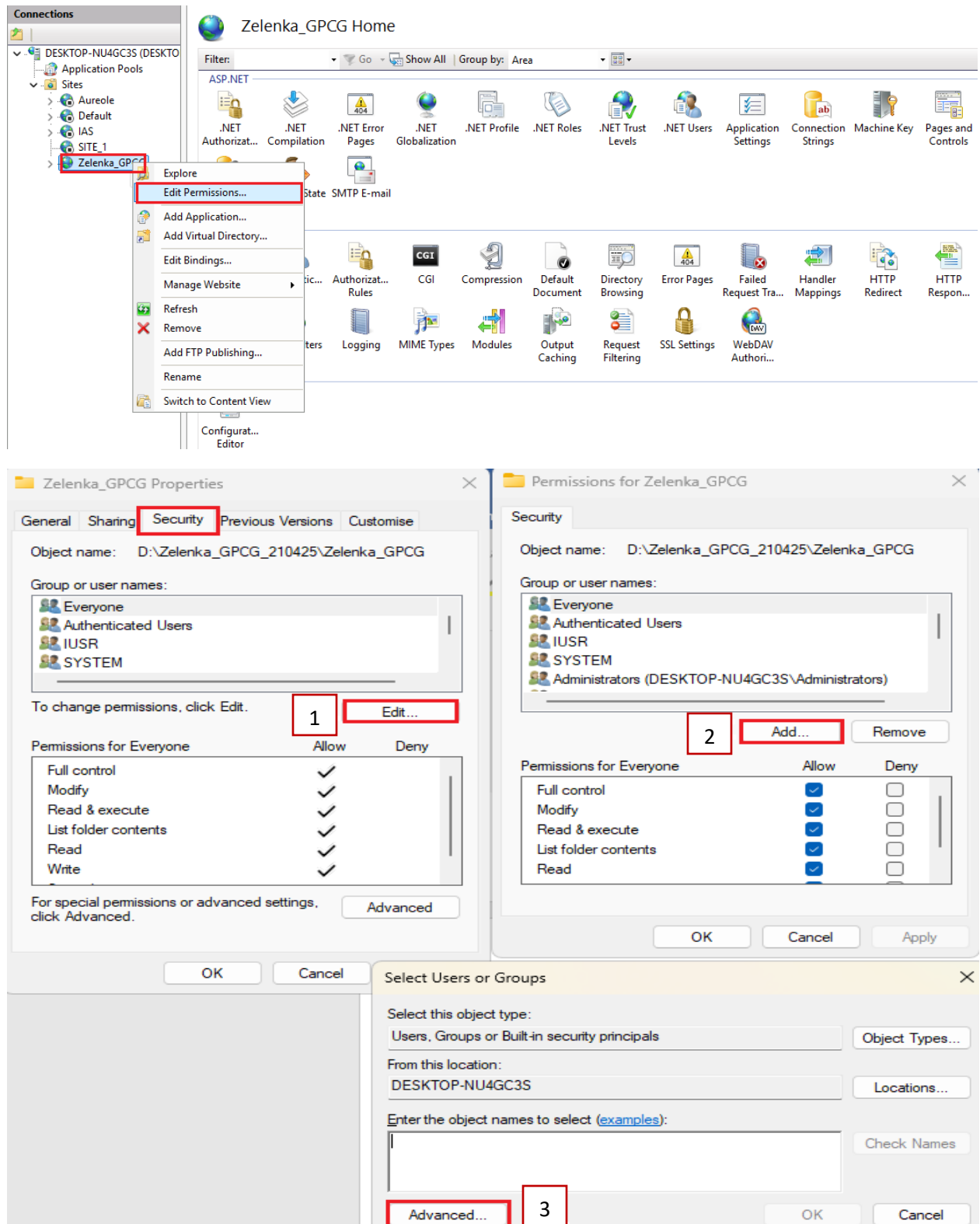
LINK - <https://jotelulu.com/en-gb/support/tutorials/how-to-install-iis-on-windows-10/>

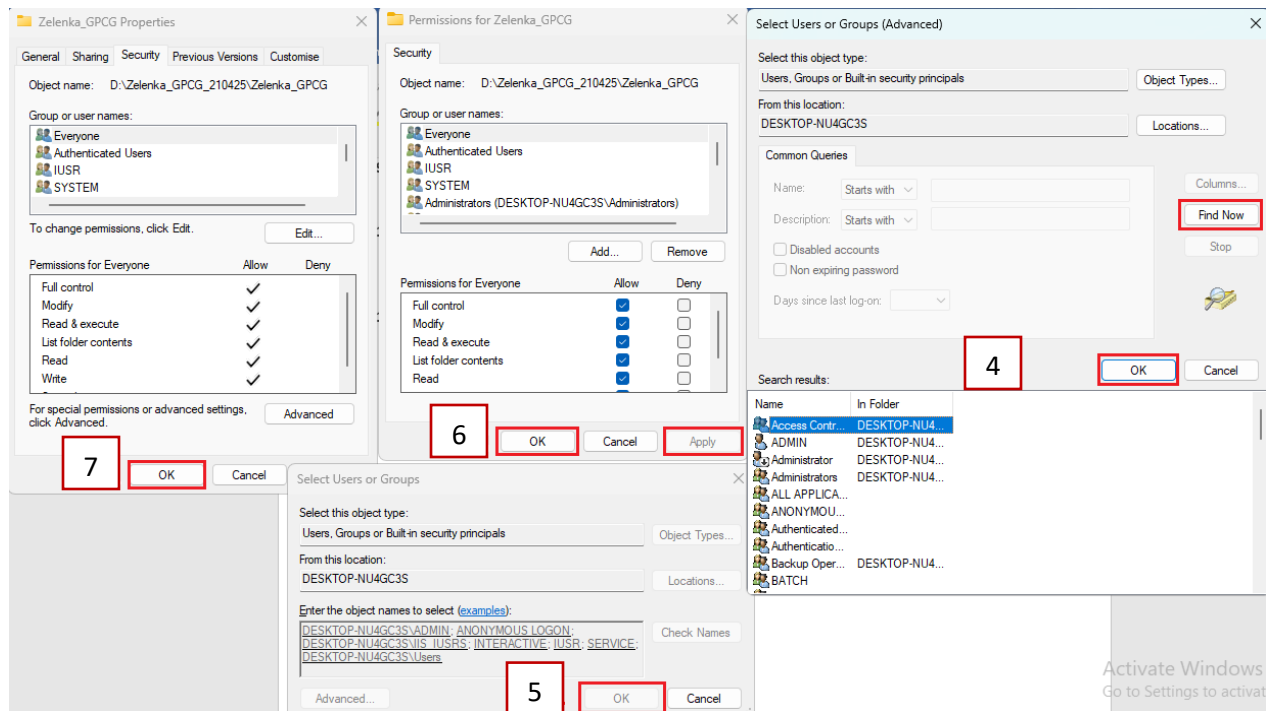
- RIGHT CLICK ON SITES AND SELECT ADD WEBSITE...



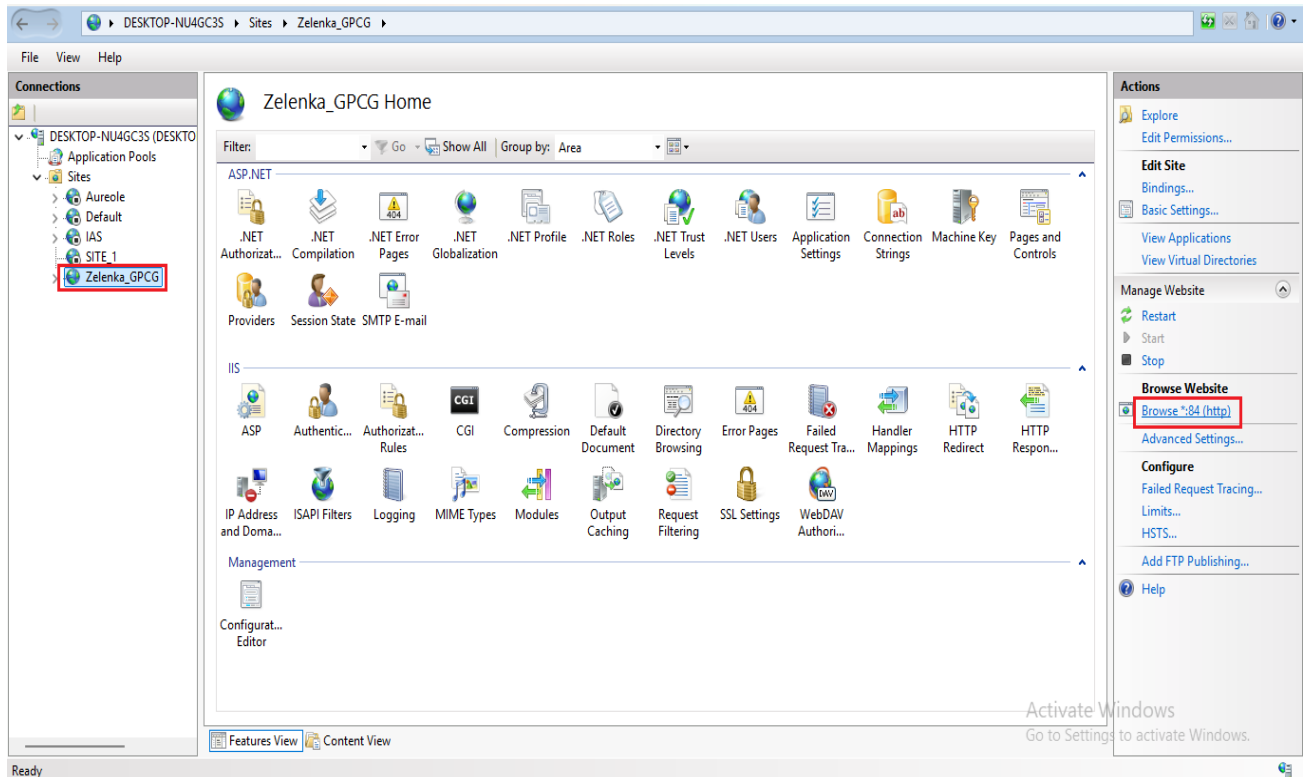


- USER HAVE TO GIVE PERMISSION OF ANONYMOUS LOGON, IIS IUSR, SERVICE, USERS AND REMAINING PERMISSION ADD BY DEFAULT.





7) GO TO WEB BROWSER (GOOGLE CHROME/MICROSOFT EDGE, ETC) AND TYPE LOCALHOST AND ENTER, MAIN PAGE WILL OPEN. (**LOCALHOST:84 OR ACCESS THE APPLICATION FROM IIS MANAGER**)



GPCGi PRO



Activate Windows

Go to Settings to activate Windows.

Syngene

- 8) ABOVE MENTION ALL STEP WILL SAME FOLLOW FOR IGLNE EQUIPMENT AND COATER EQUIPMENT APPLICATION INSTALLATION